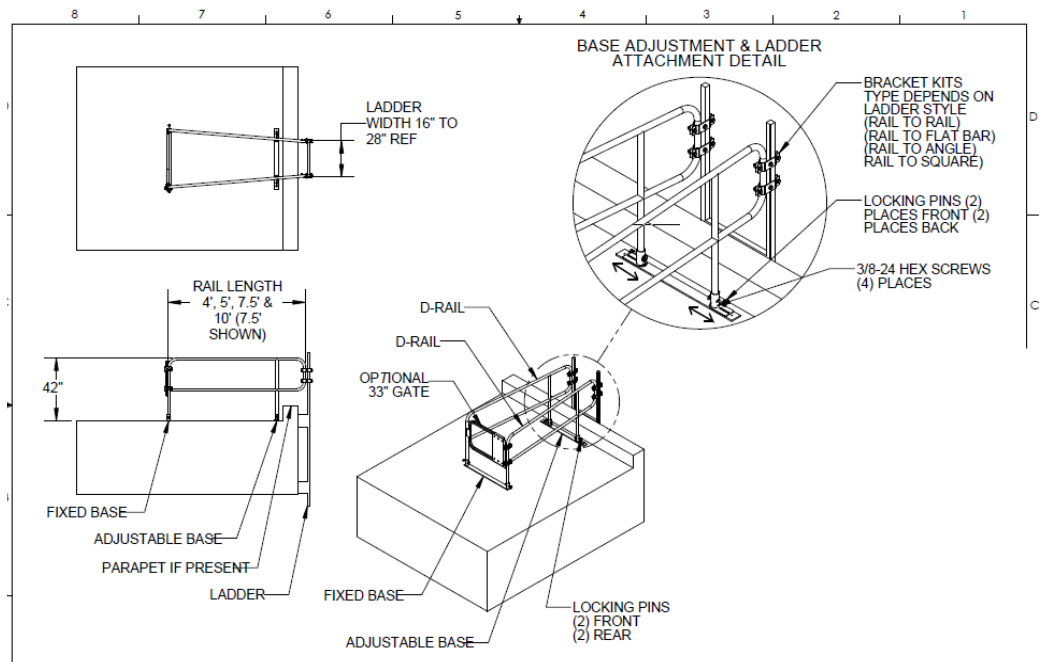


# TremSafe Rooftop Ladder Access System

## Installation Manual

- 1) Place adjustable base near edge of roof or parapet. Place fixed base at distance for rail length being used.
- 2) Place rails into bases and insert locking pins.
- 3) Loosen 3/8" screws on ADJ. Base and move tube receivers to align rails with ladder width. Once aligned tighten fasteners. (Screws may have to be removed for large adjustments.)
- 4) After rails are aligned attach bracket kits and tighten fasteners.
- 5) Install optional self closing gate per TremSafe Self-Closing Safety Gate installation manual.



# TremSafe Rooftop Ladder Access System

## *Installation Manual*

- Verify that all fasteners are tightened.
- Replace any missing fasteners.
- Replace rails if there is any damage.
- Replace gate if there is any damage.



Roofing & Building Maintenance

[www.tremcoroofing.com](http://www.tremcoroofing.com)  
3735 Green Road  
Beachwood, Ohio 44122  
1.800.852.6013

220 Wicksteed Avenue  
Toronto, Ontario M3H 1G7  
1.800.668.9879

Tremco Roofing and Building  
Maintenance is part of Tremco  
Construction Products Group

Tremco is a US Registered trademark of Tremco CPG Inc.

The information provided on this data page supersedes all previous data concerning this product and its application.

The Statements provided concerning the materials shown are intended solely as a general guide for material usage and are believed to be true and accurate. Since the manner of use is beyond our control, Tremco DOES NOT MAKE NOR DOES IT AUTHORIZE ANY WARRANTY OF MERCHANTABILITY OR FITNESS FOR ANY PURPOSE, OR ANY OTHER WARRANTY, GUARANTEE OR REPRESENTATION, EXPRESSED OR IMPLIED, CONCERNING THIS MATERIAL EXCEPT THAT IT CONFORMS TO TREMCO'S PRODUCT SAMPLE. Buyer and user accept the product under those conditions and assume the risk of any failure, injury of person or property and loss or liability resulting from the handling, storage or use of the product, whether or not it is handled, stored, used in accordance with directions or specifications. UNDER NO CIRCUMSTANCE SHALL TREMCO BE LIABLE FOR CONSEQUENTIAL OR INCIDENTAL DAMAGES ARISING FROM ANY BREACH OF WARRANTY. IN ALL CASES, TREMCO'S LIABILITY IS LIMITED, AT TREMCO'S OPTION, TO THE REPLACEMENT OF GOODS, OR THEIR VALUE, PROVEN TO BE DEFECTIVE IN MANUFACTURING.